

CHEAT HAPPENS GHOST RECON WILDLANDS TRAINER for STEAM

This trainer is designed for **OFFLINE PLAY**. In fact, the game will disconnect you if you try to use the trainer online. **CHEAT HAPPENS** does **NOT** condone multiplayer cheating!

This trainer is designed **ONLY** for the **STEAM** release of the game. Trying to use it in other platforms will not work!

This trainer is different than some of our other trainers in that you must **LAUNCH THE TRAINER FIRST!** The trainer will actually launch the game for you!

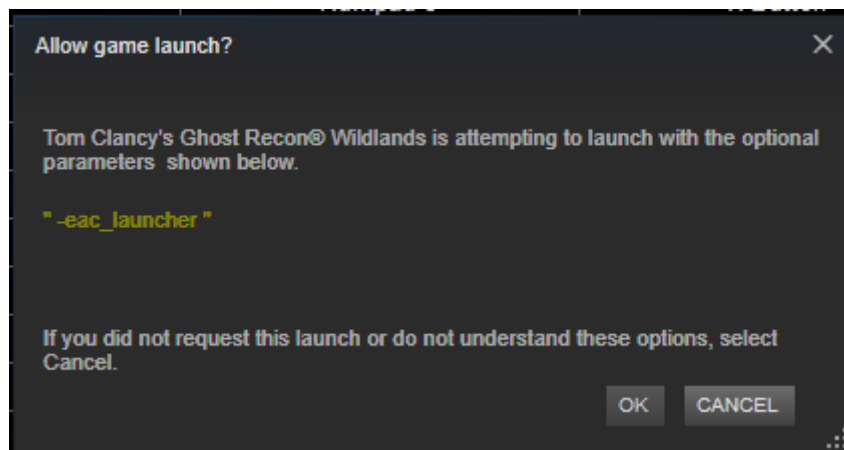
The trainer **WILL NOT WORK PROPERLY** if the game is **ALREADY RUNNING** and you run the trainer. Please make sure that **GHOST RECON WILDLANDS** is **NOT** running already.

If **STEAM** is not running, the trainer will run steam and the game for you when you run the trainer.

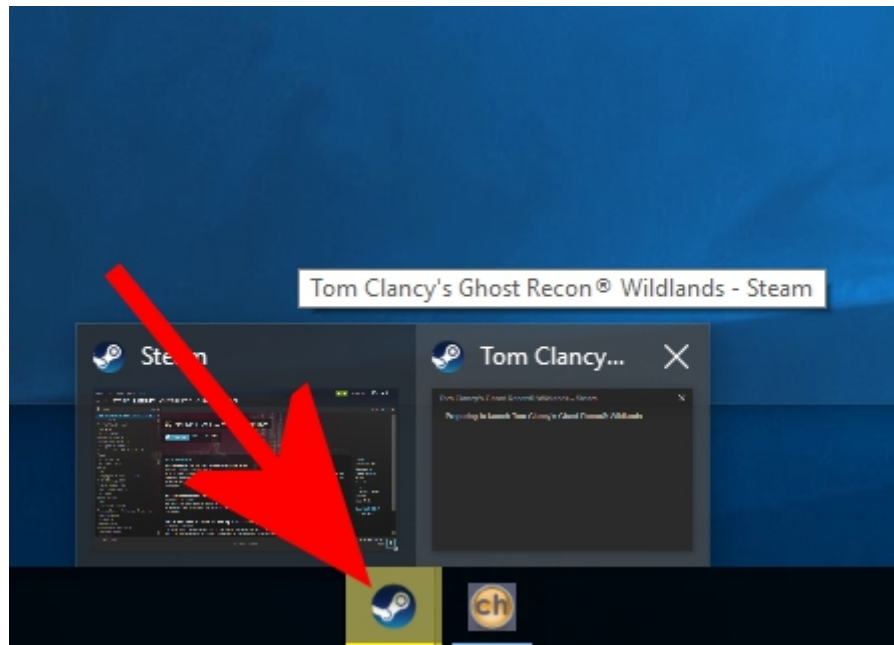
STEP BY STEP INSTRUCTIONS

STEP ONE

Launch the trainer. This is pretty simple. The trainer will run, then will launch steam if it's not already running, then will open up a prompt like the one you see below:

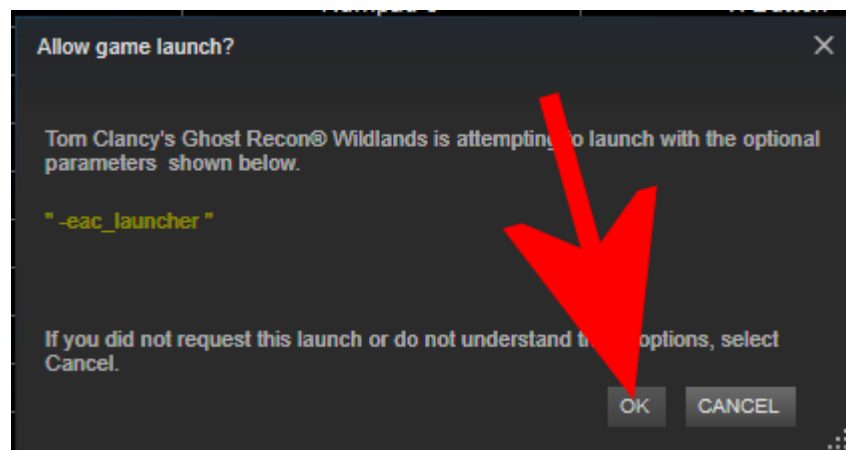


It may take 30 seconds or more for this prompt to show up. If you have waited and do not see the prompt, make sure it's not hidden or not showing up behind steam. You can mouse over **STEAM** in the taskbar and see if it's there:



STEP TWO

Next, click the **OK** button to launch the game.



The game will launch and eventually you will be at the **MAIN MENU**.

STEP THREE

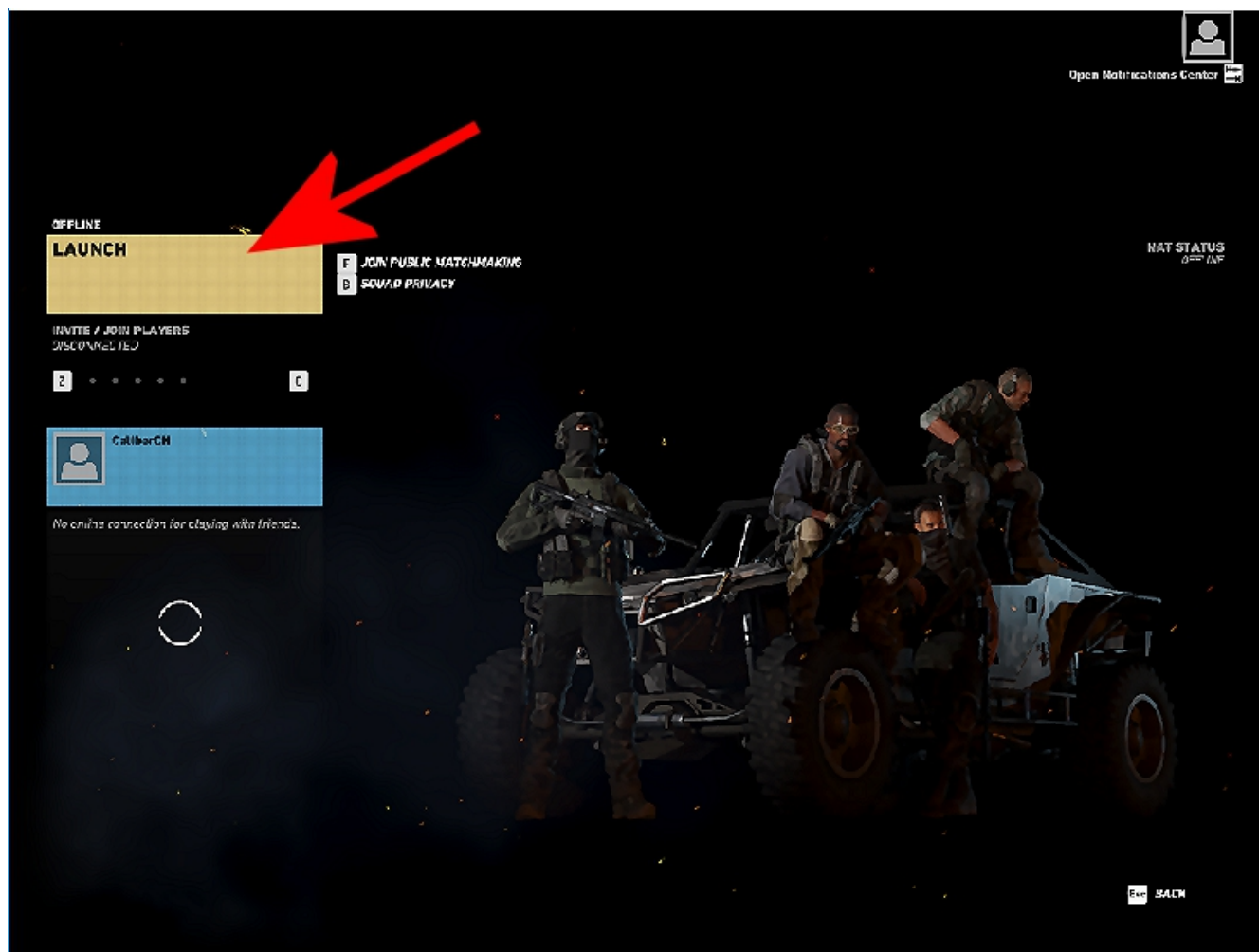
Next, you can finally press **F1** to activate the trainer while you are at the main menu. The trainer will say 'Please Wait' and then 'Activated'.

Then you can click the **CONTINUE CAMPAIGN** button which will start the Single Player Campaign or continue it.



STEP FOUR

Finally, click the **LAUNCH** button to enter the game!



This trainer will **NOT** work online and if you try to join in a cooperative online or multiplayer event, the server will remove you very quickly. We **DO NOT** condone online cheating.

STEP FIVE

Lastly, to revert the game and the installation back to normal, it's best practice to **CLOSE THE GAME FIRST**, and **THEN** close the trainer. This will allow the trainer to reset the game back to it's normal state to be able to be used **WITHOUT A TRAINER** for online play.